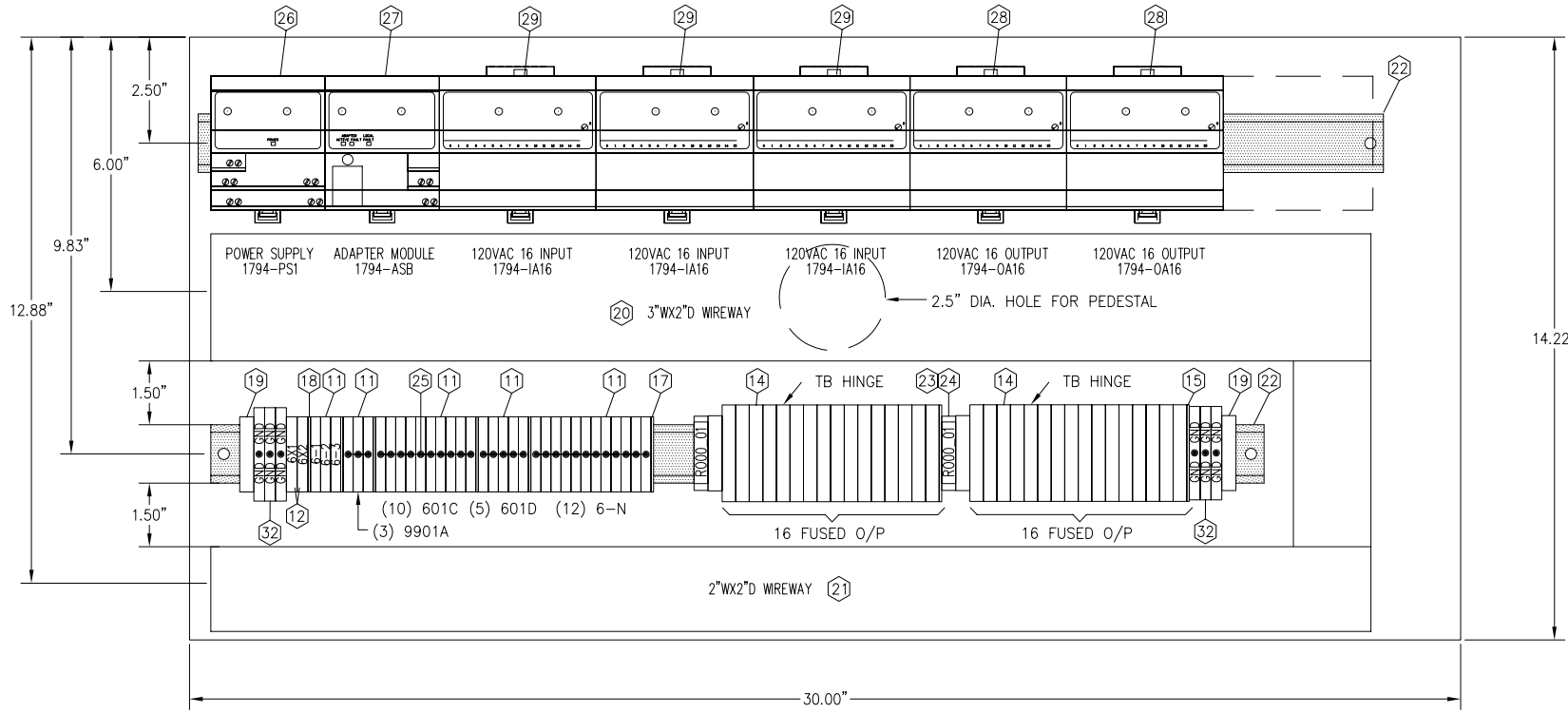
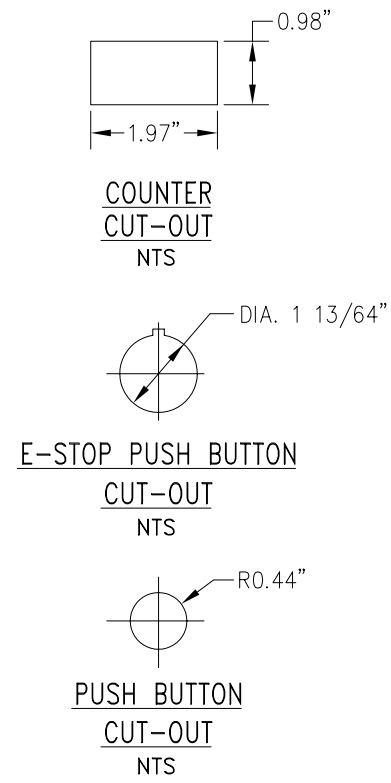


RACK 6 - CONSOLE C6 LAYOUT
NTS



CONSOLE C6 - INSIDE LAYOUT
NTS



E-STOP PUSH BUTTON
CUT-OUT
NTS

MATERIAL LIST			
ITEM No.	QTY.	MODEL No.	DESCRIPTION
①	1	1488JQ11 1495C35 1495XN	HAMMOND 30"x16" CONSOLE C/W PEDESTAL & BASE
②	11	ZB4BW031 ZB4BK1233	TELEMECHANIQUE 2-POS. MAINTAINED GREEN ILL. P/B
③	7	XB4B021	TELEMECHANIQUE 2-POS. MAINTAINED NON-ILL. P/B
④	9	ZB4BW031 ZB4BK1263	TELEMECHANIQUE 2-POS. MAINTAINED BLUE ILL. P/B
⑤	1	ZB4BW031 ZB4BK1233 ZBE101	TELEMECHANIQUE 3-POS. MAINTAINED GREEN ILL. P/B
⑥	1	XB4BW3435	TELEMECHANIQUE RED ILL. P/B MOMENTARY
⑦	1	800T-FXP16RA7 800T-X64B	ALLEN-BRADLEY 3-POSITION ILL. PUSH-PULL UNIT
⑧	1	ZBY4H101	TELEMECHANIQUE FLUSH MTD WITH BEZEL LEGEND (30x40mm) C/W 8x27mm BLANK LEGEND
⑨	1		(2"x0.5") OR (2"x0.75") OR (1.5"x4.5") WHITE ON BLACK LAMACOID
⑩	1		WHITE BAKED ENAMEL PANEL FOR ITEM 1
⑪	33	SAK2.5EN	WEIDMULLER FEED THROUGH TERMINAL BLOCKS
⑫	2	SAK4EN	WEIDMULLER FEED THROUGH TERMINAL BLOCKS
⑬	0	910170	WEIDMULLER THERMAL MAGNETIC ONE-POLE, 3A, CIRCUIT BREAKER, TYPE 42-01
⑭	32	ASK1LD C/W 2A FUSE	FUSED TERMINAL BLOCKS WITH LED BLOWN FUSE INDICATION
⑮	2	AP	WEIDMULLER TERMINAL BLOCK END PLATE FOR ITEM 14
⑯	0	TW	WEIDMULLER TERMINAL BLOCKS PARTITION FOR ITEM 11
⑰	4	AP	WEIDMULLER TERMINAL BLOCK END PLATE FOR ITEM 11
⑱	1	AP	WEIDMULLER TERMINAL BLOCK END PLATE FOR ITEM 12
⑲	4	EW35	WEIDMULLER END BRACKET
⑳	6 ft	-	3" x 2" WIREWAY (GREY) C/W COVER
㉑	6 ft	-	2" x 2" WIREWAY (GREY) C/W COVER
㉒	2 ft	051451	WEIDMULLER SLOTTED STEEL MOUNTING RAIL TS 35 x 7.5
㉓	2	Scht5s	WEIDMULLER LABEL CARRIER FOR BACK TERMINAL BLOCK GROUP
㉔	2	STRS E505	WEIDMULLER LABELS AND PROTECTIVE STRIP FOR ITEM 15
㉕	As Req'd	-	WEIDMULLER JUMPER UNITS (Q3, Q5, Q10) AS REQUIRED
㉖	1	1794-PS1	POWER SUPPLY FOR FLEX I/O RACK
㉗	1	1794-ASB	ADAPTER MODULE
㉘	2	1794-OA16 1794-TBN	16-POINT ISOLATED OUTPUT CARD C/W BASE
㉙	3	1794-IA16 1794-TBN	16-POINT 120VAC INPUT CARD C/W BASE
㉚	200	-	TERMINAL BLOCK/CCT BREAKER MARKERS
㉛	1	G0-465-489.1	HECON COUNTER
㉜	6	EK 4/35	WEIDMULLER EARTH TERMINAL BLOCKS

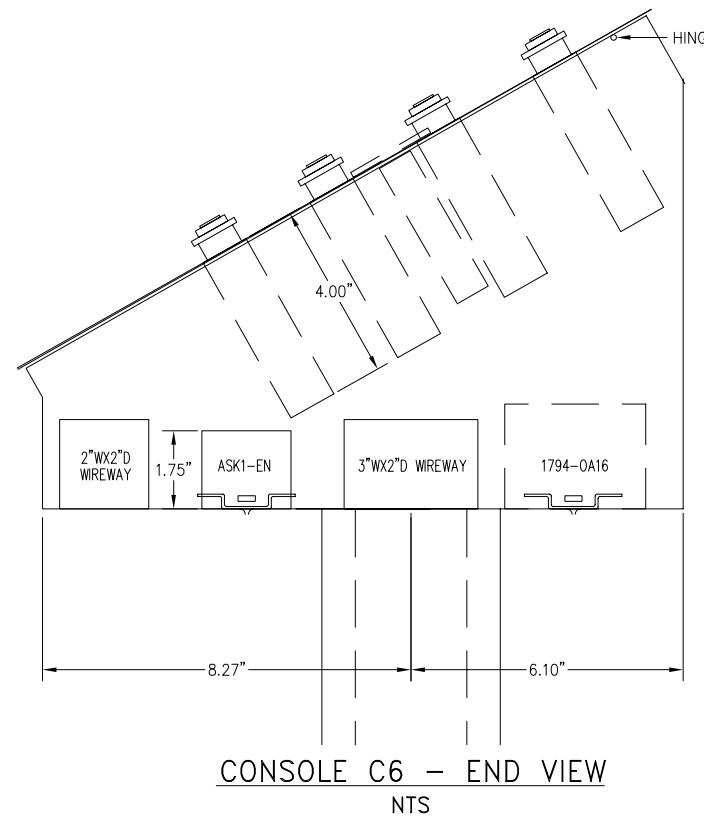
- WIRE COLOR SCHEME:**
- 16 GAUGE CONTROL WIRE, TYPE TEW-105C SHALL BE USED FOR ALL CONTROL WIRING.
 - 12 GAUGE WIRE TYPE SHALL BE TEW-105C SHALL BE USED FOR ALL MAIN POWER WIRING.
 - THE COLOUR SCHEME FOR CONTROL AND POWER WIRING SHALL BE AS FOLLOWS:
 - INPUT CARDS: RED
 - OUTPUT CARDS: BLUE
 - ANALOG CARDS: BLACK (+), WHITE (-)
 - 120VAC: WHITE
 - NEUTRAL: GREEN
 - GROUND: PURPLE
 - (+)24VDC: GREEN
 - (-)24VDC: ORANGE

DATE	BY	DESCRIPTION	CHKD.
BAPR 2002	RJA	ISSUED FOR QUOTATION	

DWG. No.	TITLE
2001-25E-0730	CONSOLE C6 PHYSICAL LAYOUT



DESIGNED	DRAWN
ES	RJA
CHECKED	DATE
	13 MAR, 2002
DESIGN	SCALE
	NTS
PROJECT MANAGER	SPECIFICATION No.
ES	200142EP503
PROJECT TECHNICIAN	
RJA	



CONSOLE C6 - END VIEW
NTS