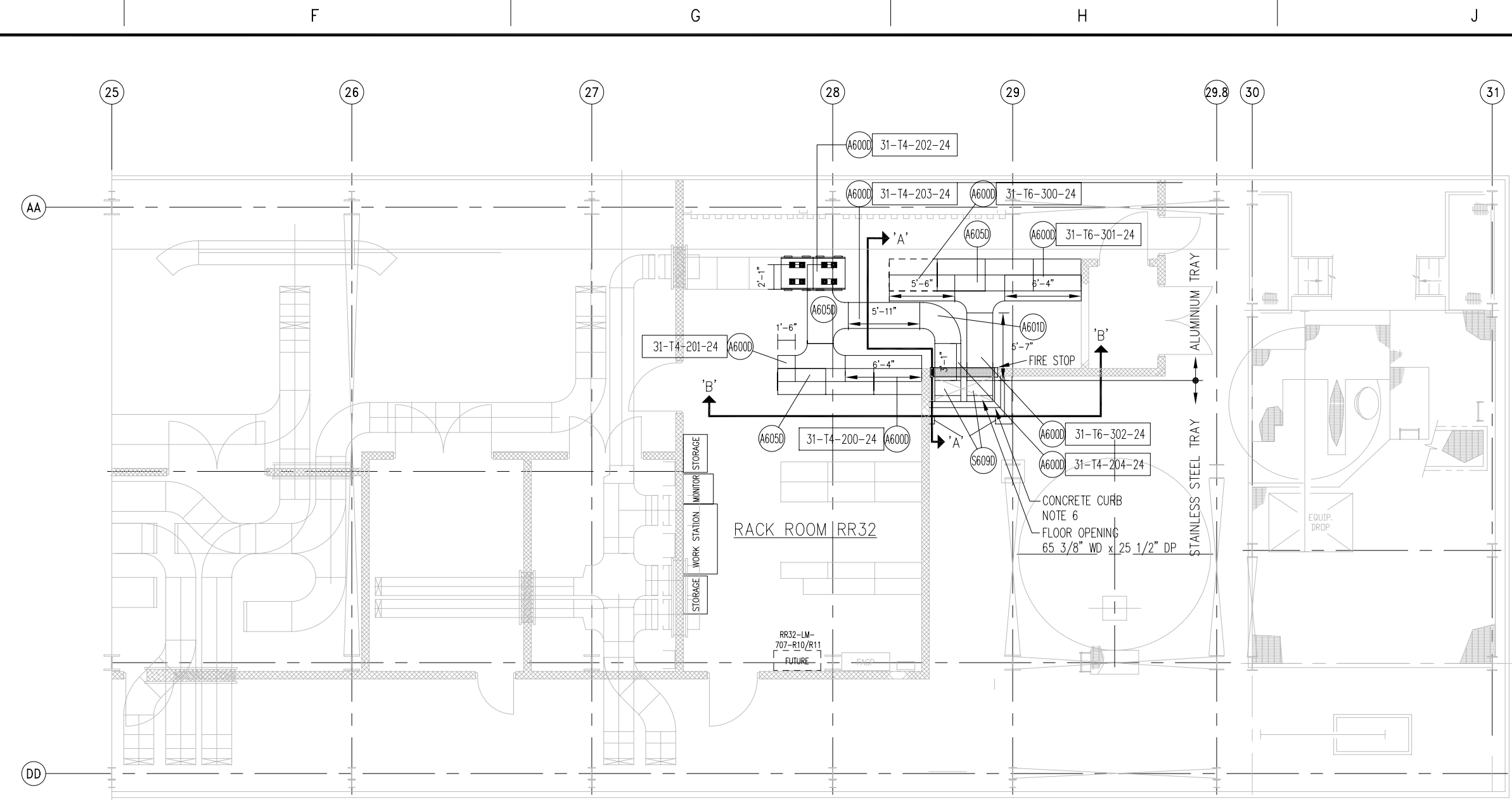
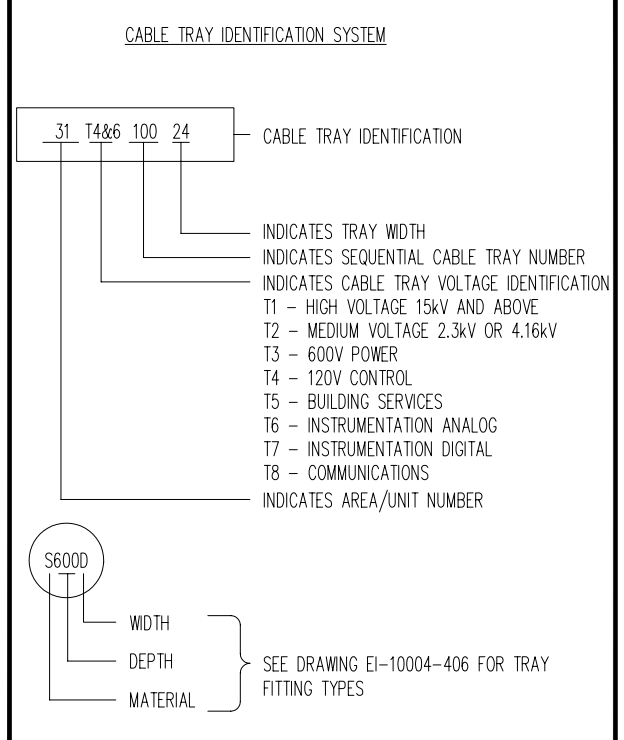


ELECTRICAL EQUIPMENT LAYOUT IN RACK ROOM RR32  
FLOOR EL. @ 144'-6"



CABLE TRAY LAYOUT @ EL.145'-6" IN RACK ROOM RR32  
FLOOR EL. @ 144'-6"



- NOTES
- FOR CABLE TRAY BILL OF MATERIAL SEE DRAWING NO. EI-10004-406.
  - CONTRACTOR TO RELOCATE OFFICE FURNITURE AND STORAGE CABINETS TO THIS WALL.
  - INSTALLATION OF NEW CABINETS IN RACK ROOM RR32 ARE IN THIS SCOPE.
  - CONTRACTOR TO CORE DRILL HOLE THROUGH FLOOR FOR TRAYS.
  - WALL AND DOOR PROVIDED BY OTHERS.
  - CONTRACTOR TO INSTALL CONCRETE CURB AS PER MILL STANDARD.

SYSTEM CABINET LEGEND

RR32-FL3-4F	- (HPM 1005)
RR32-FL3-4R	- (HPM 1009)
RR32-FL3-5F	- (LM 1007)
RR32-FL3-5R	- (LM 1011)

ISSUED FOR CONSTRUCTION  
10004-SP-03  
17 NOVEMBER 2000

NO.	DATE	BY	DESCRIPTION	CHKD.
1	17NOV 2000	AWL	ISSUED FOR CONSTRUCTION FOR PHASE 2 CONTRACT. ADDED TRAY FILL DETAILS & REVERSED TRAYS TO AND TO AS SHOWN ON DRAWING.	
0	25AUG 2000	AWL	CONSTRUCTION	
A	04AUG 2000	AWL	QUOTATION	

REVISIONS

NO.	DATE	BY	DESCRIPTION	CHKD.

REFERENCE DRAWINGS

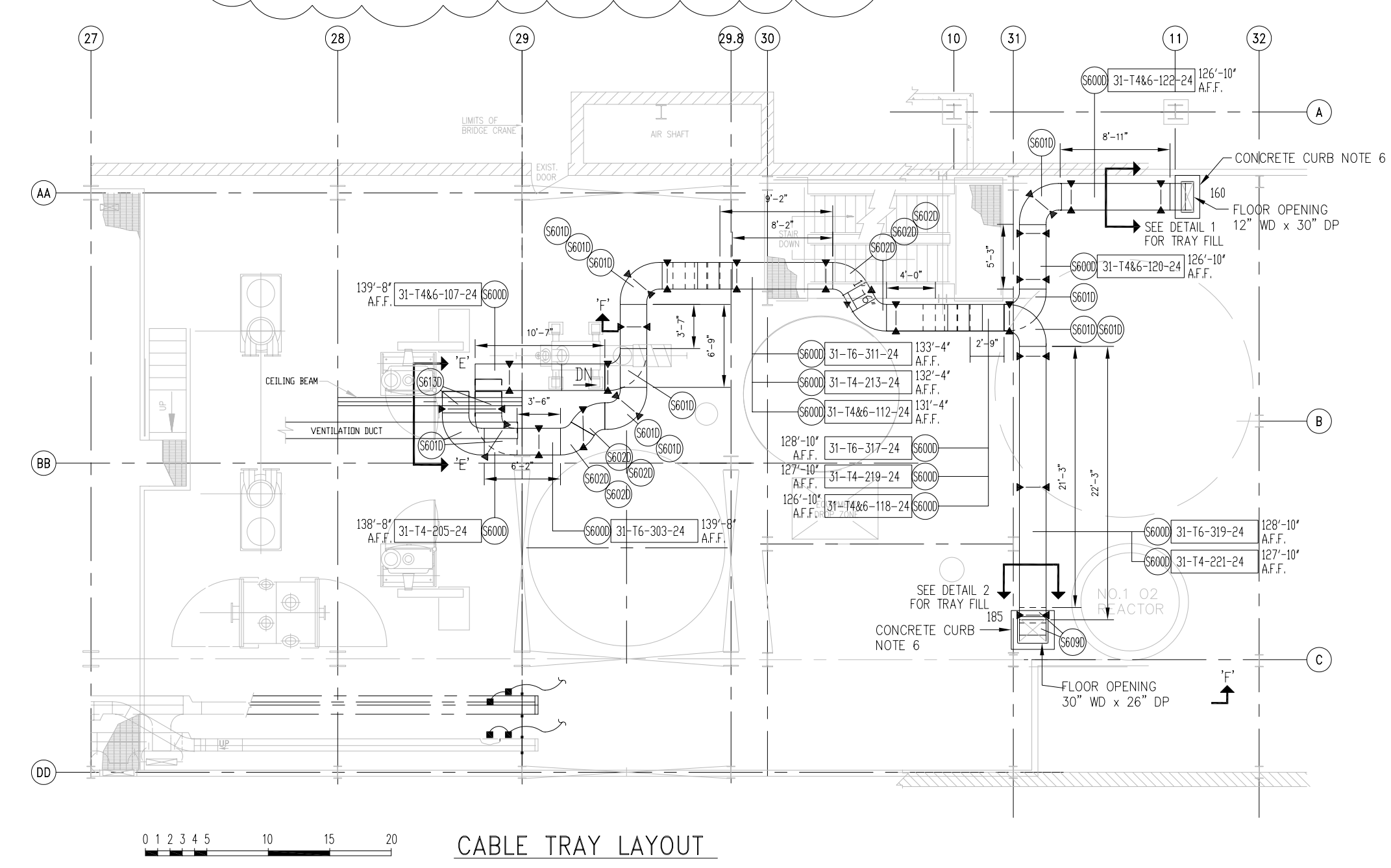
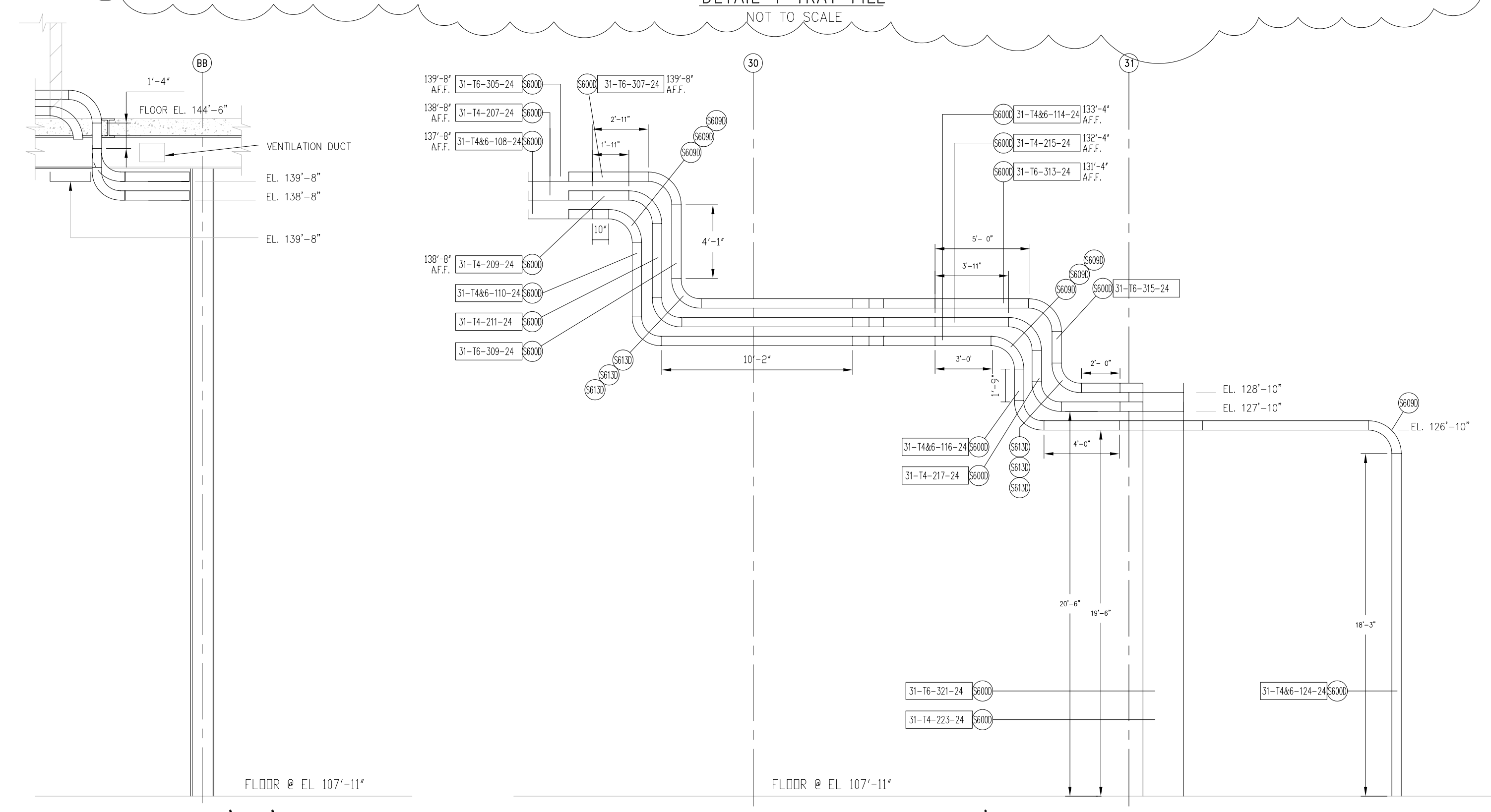
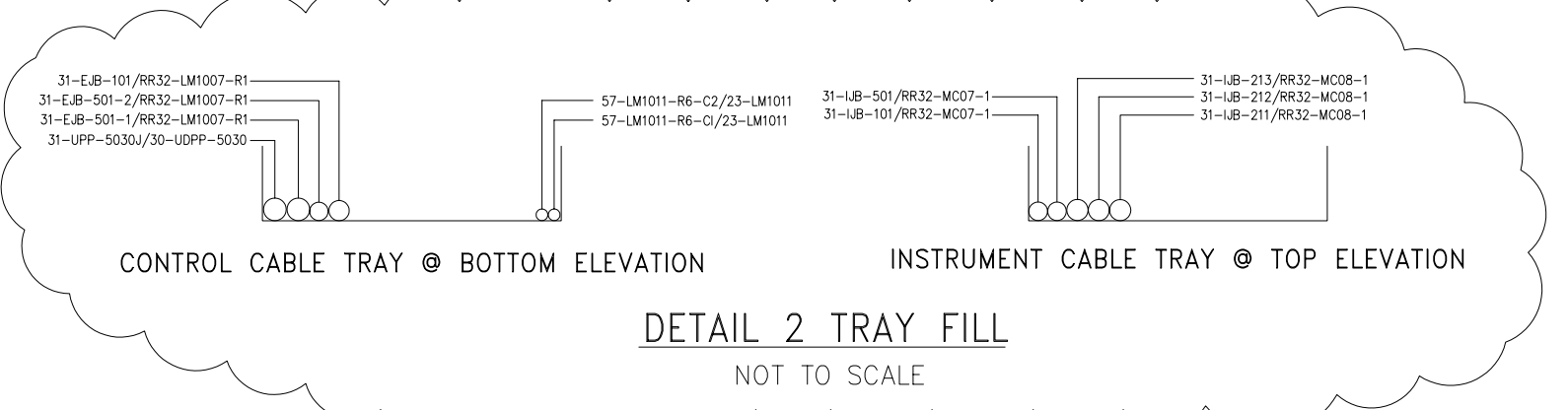
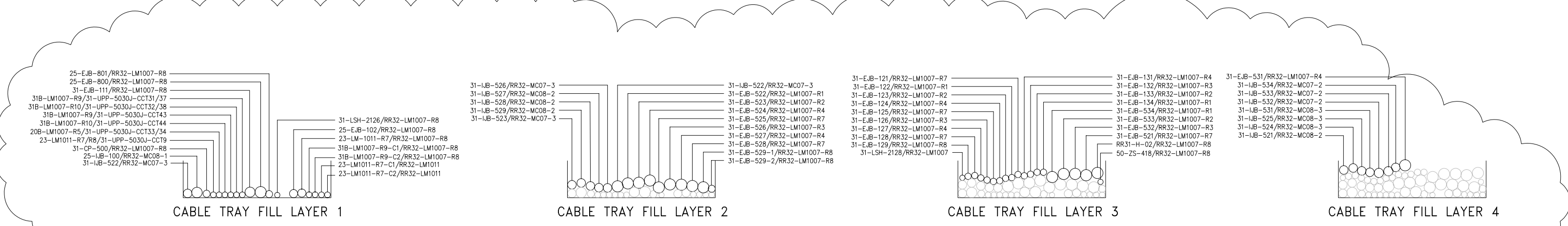
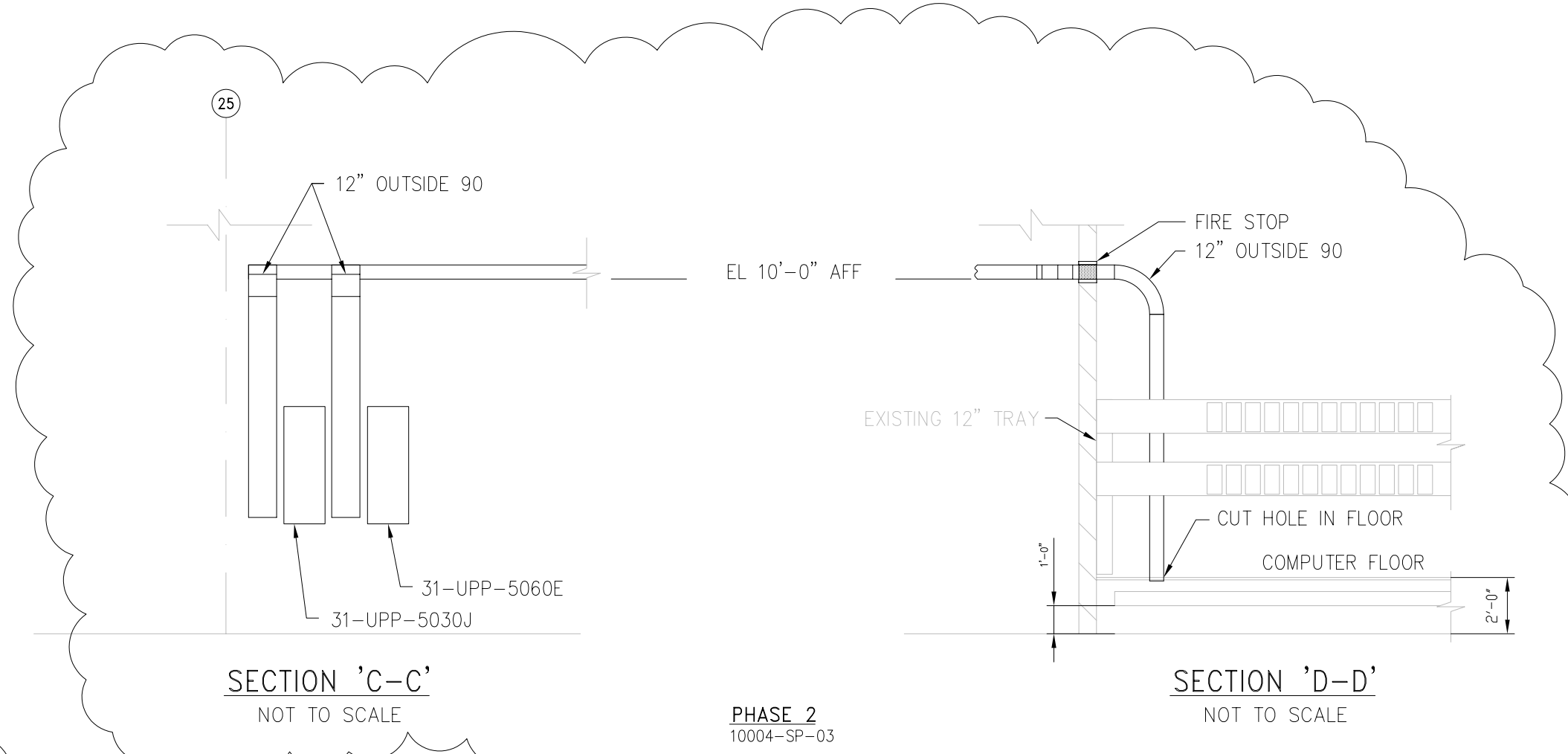
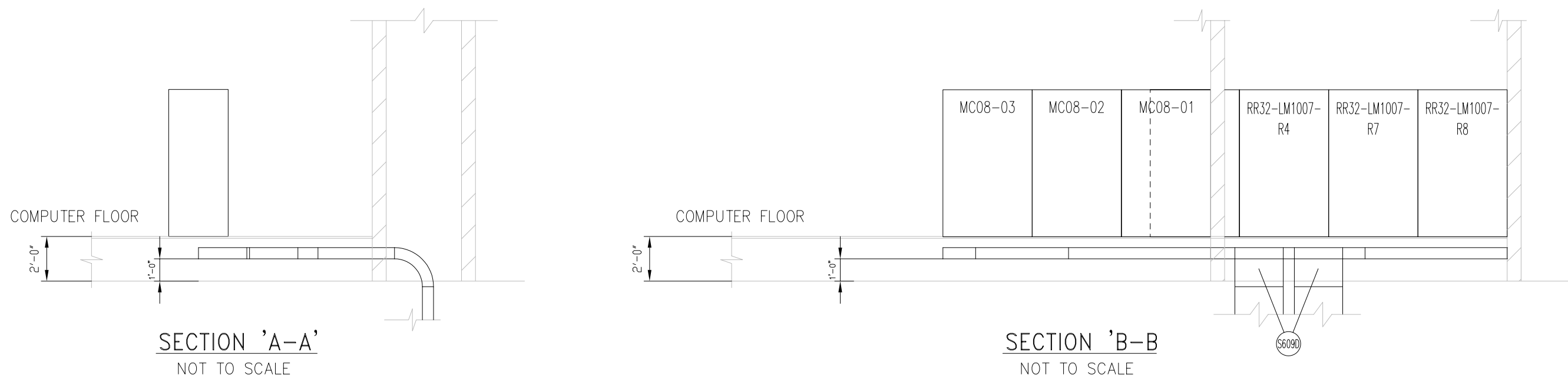
NO.	DATE	BY	DESCRIPTION	CHKD.

DESIGNED	DATE	AWL



CABLE TRAY LAYOUT AT RACK ROOM RR32D AND FLOOR ELEVATIONS 144'-6" AND 107'-11"

JOB No. 10004 CONSULTANT DWG. No. EI-10004-400  
DWG. No. 3-1-XXX SHT. 4/4



CABLE TRAY LAYOUT  
FLOOR EL. @ 107'-11"